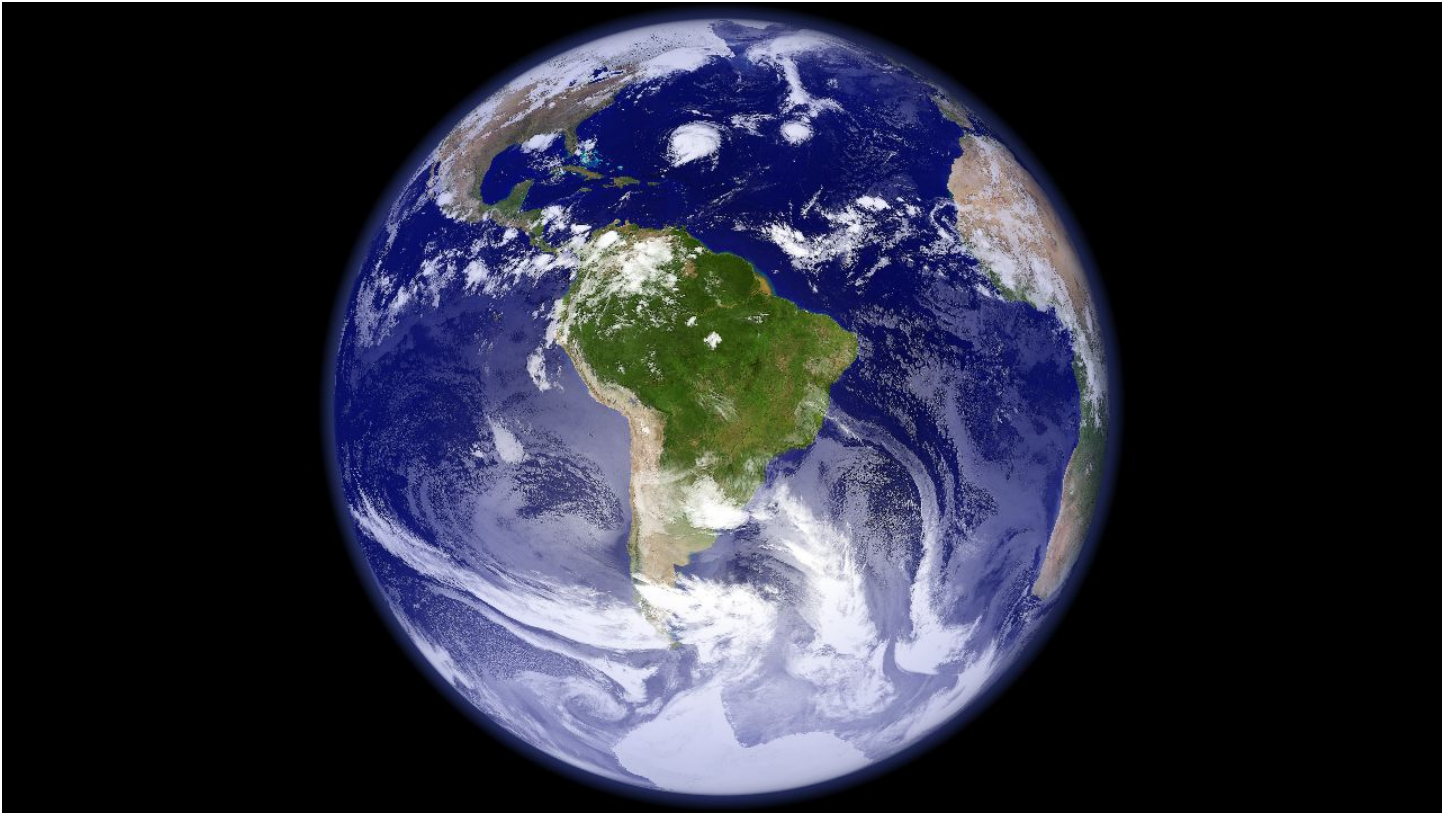


DARKNESS WAS THERE OVER ALL THE EARTH



Gen. 1:2 *“And the earth was formless and void, and **darkness was over the surface of the deep**; and the Spirit of Yahveh was moving over the surface of the waters.”*

This is talking about the atmosphere being dark at that time so that the light from the sun and moon couldn't penetrate the earth's atmosphere. Then in Gen. 1:15-16 it tells how the atmosphere was made so that the light from the moon and sun was allowed to light up the earth.

DASYD MINISTRY "DO AS YESHUA DID" dasydministry.org Jerry Hennig (Jan/25)
Excerpt from the BC Book.